



DEHERMAN

GAP FILLING EPOXY PASTE ADHESIVE FOR CIVIL ENGINEERING USE

DESCRIPTION DEHERMAN EPOXY is specially formulated non-sag epoxy filling paste and adhesive. This easy to use two-part epoxy product sets after mixing with excellent properties ideally suited for the following applications.

USES	BONDING	FILLING AND REPAIR
	<ul style="list-style-type: none"> • Precast concrete articles • Marble & Granite • Natural stones • Bricks and ceramics • Metals 	<ul style="list-style-type: none"> • Concrete Pipes and Tanks • Fibreglass articles • Concrete floors and stairs • Concrete columns • Insitu formed concrete

ADVANTAGES	<ul style="list-style-type: none"> • Simple 1 : 1 mix ratio • Creamy texture, blends easily • Non sag on vertical surfaces • Rapid setting • Adheres and cures under adverse conditions (cold and damp) • Good strength retention after prolonged immersion in water • Tensile and compressive strength superior to concrete • Very good chemical resistance
------------	--

PRODUCT SPECIFICATION	PART "A"	PART "B"
	CONSISTENCY: Paste COLOUR: White FLASH POINT: Above 100°C	CONSISTENCY: Paste COLOUR: Neutral yellow FLASH POINT: Above 100°C

SURFACE PREPARATION	METALS:
	Should be grit blasted to clean surface. Mechanically abraded and degreased. Wire brushing is not entirely satisfactory and gives minimal adhesion only.
	PAINTED SURFACES:
	A proprietary brand paint stripper should be used. Concrete - the surface may be either flame cleaned or mechanically abraded.

PROCESSING DATA	MIXING RATIO:	1 part resin to 1 part hardener by volume
	MIXING:	Mix until uniform light yellow
	WORKING LIFE AT 25°C:	10 minutes
	MINIMUM APPLICATION TEMPERATURE:	10°C
	MINIMUM CURE TIME:	12 hours at 25°C
	FULL CURE TIME:	2 day at 25°C

IMPORTANT INFORMATION

It is essential that the correct mixing ratio be used and that the Part "A" and Part "B" are thoroughly mixed together before use. Inaccuracies and poor mixing will result in lower physical properties of the cured system and, if the error is sufficiently large, the system may not cure satisfactorily and discolour on ageing.

CURED PROPERTIES (TYPICAL)

MAXIMUM OPERATING TEMPERATURE:	70°C
DENSITY:	1.5 kg per litre
TACK FREE TIME @ 25° C	45-55 Min
TENSILE BOND STRENGTH:	6 MPa
COMPRESSIVE STRENGTH:	60 MPa
FLEXURAL STRENGTH:	15 MPa
SHEAR STRENGTH @ 25° C	10MPa

Properly mixed Ahedisive will not stain or discolour white or light coloured marble and ceramics.

AVAILABILITY

DEHERMAN Epoxy is available in 1Kg & 8Kg kits. Shelf life of unopened kits is 1 years minimum. Product should be stored in cool dry store.

CLEANING

Uncured Adhesive can be removed with Thinners.

PRECAUTIONS

Avoid prolonged contact with skin. Wash affected areas with soap and warm water. For further information refer to Safety Data Sheet for DEHERMAN Epoxy Adhesive.



Remove AB glue with a putty knife

Mix AB glue at a ratio of 1:1

Stir well

2



Glue with a plastic scraper

Bond the material together and press

If plane bonding does not require auxiliary fixation, if the facade is dry hung, auxiliary support is needed to fix it



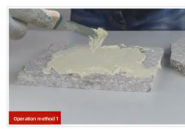
1: Epoxy resin dry hanging glue



2: Take out the appropriate amount of glue



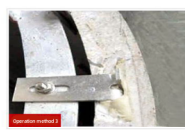
3: Evenly mix at a ratio of 1:1



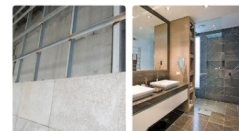
4-1: Apply the blended glue to the bonding surface



4-2: Apply the blended glue to the bonding surface

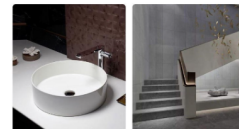


4-3: Apply the blended glue to the bonding surface



stone

Ceramic tile



Wash basin

staircase



guardrail

Background